

Brinklow Parish Plan

This report highlights the key findings of a survey sent to all households in Brinklow Parish, aiming to determine how the village should develop in order to enhance village life

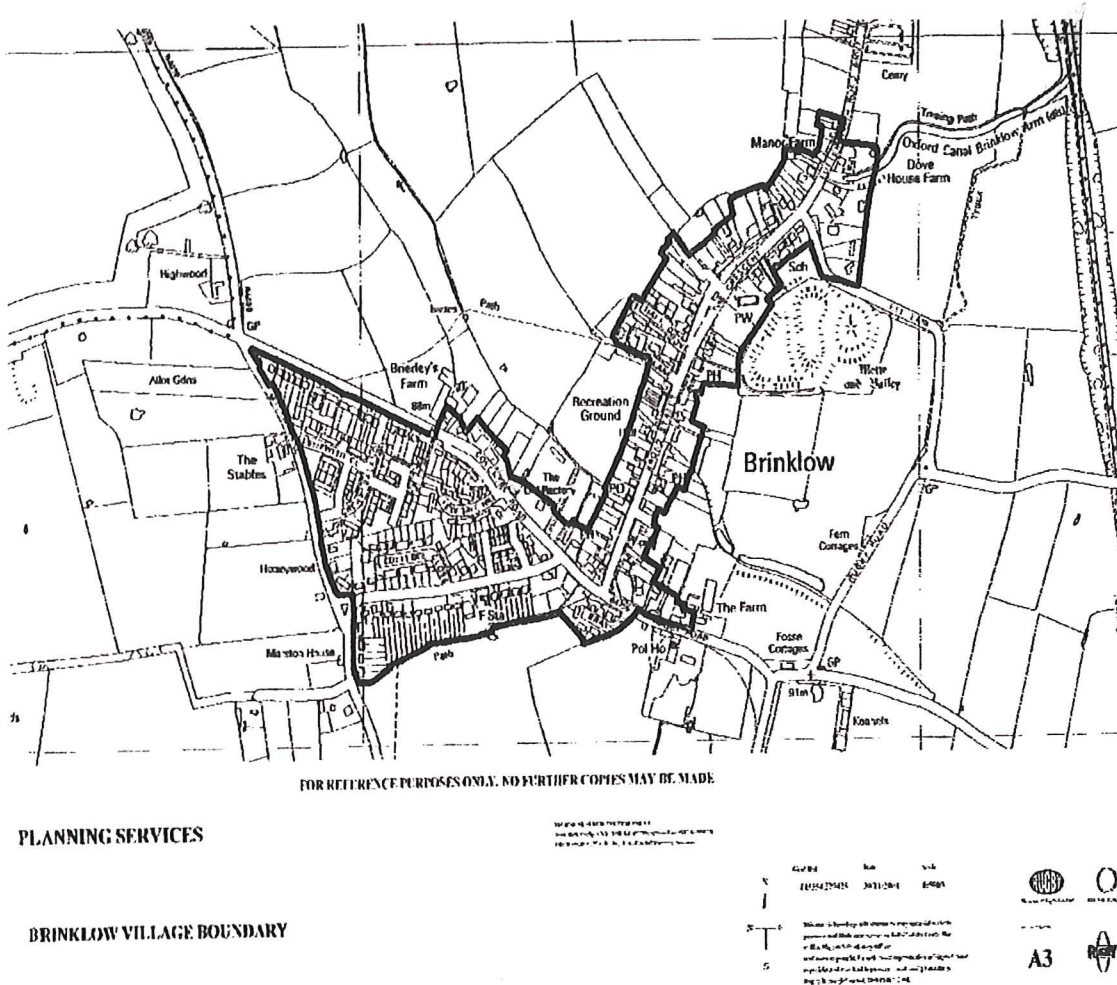
Consultation
with Residents

November 2010

INTRODUCTION

The village of Brinklow lies in the Borough of Rugby approximately 6 miles to the east of Coventry and 7 miles to the west of Rugby. The parish of Brinklow has approximately 500 households with a population of just over 1,000 residents. Figure 1 shows a map of the parish.

Figure 1: Map of Brinklow Parish



As a part of the development of a village plan for Brinklow, all households were sent a questionnaire in the autumn of 2010. Of the 496 sent out 235 were returned resulting in a 47% return. The Questionnaire was designed to assist the Parish Council in meeting the aim of the village plan:

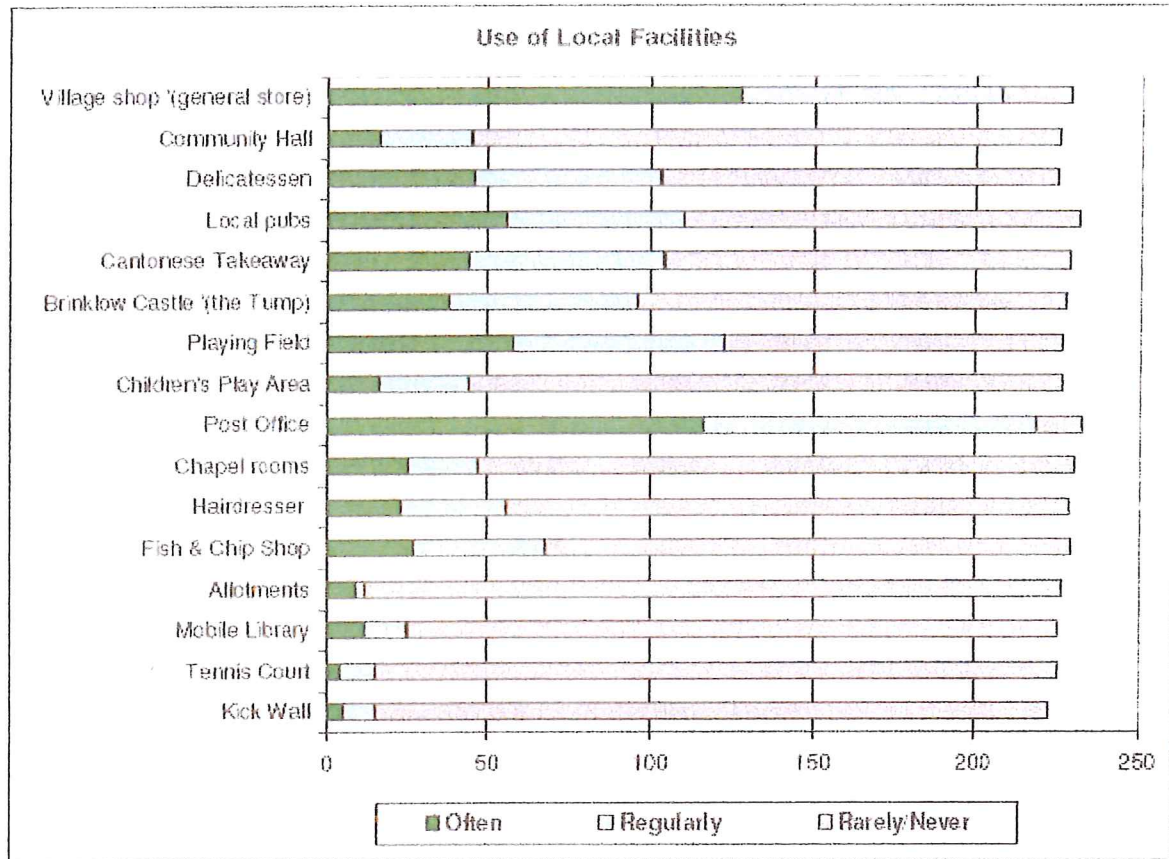
'.....to obtain the views of the people of Brinklow about how the village should develop in order to enhance village life.'

Some of the questions required a response from the household as a whole, whilst others required a response from each member of the household. This report highlights the key findings from the consultation.

BRINKLOW VILLAGE PLAN REPORT

VILLAGE FACILITIES

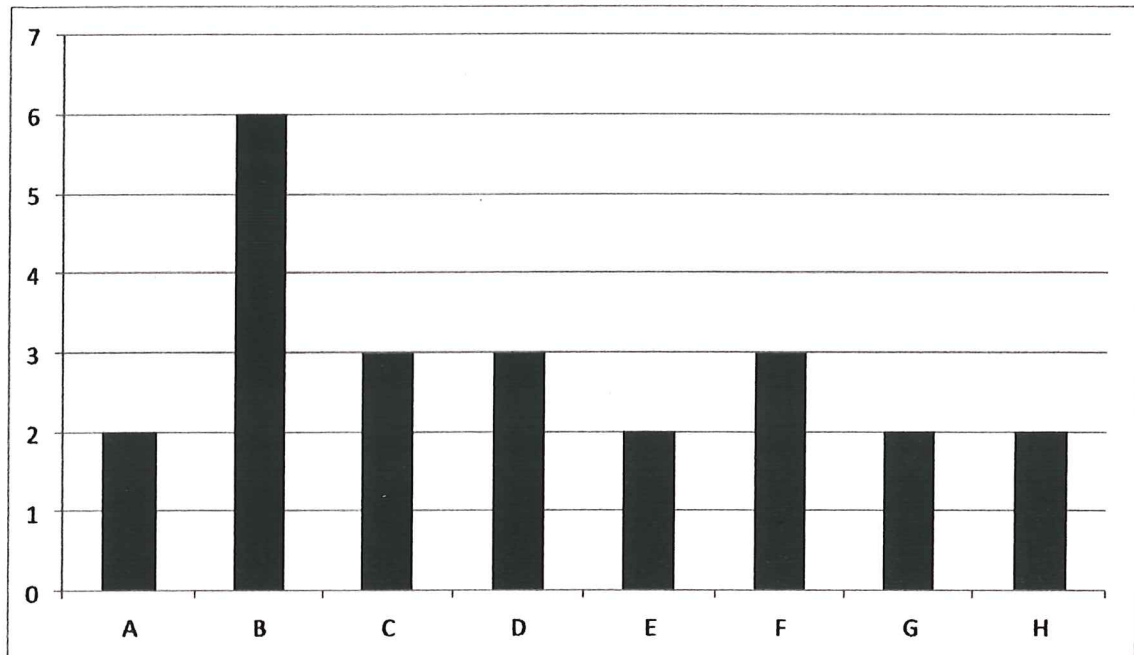
Do you or any member of your family use any of the local facilities? If so, how regularly?



	Often	Regularly	Rarely/Never
Village shop (general store)	127	81	21
Community Hall	16	29	181
Delicatessen	46	57	122
Local pubs	56	54	122
Cantonese Takeaway	44	60	125
Brinklow Castle (the Tump)	38	58	132
Playing Field	58	64	105
Children's Play Area	16	28	183
Post Office	116	103	14
Chapel rooms	25	22	184
Hairdresser	23	33	173
Fish & Chip Shop	27	41	162
Allotments	9	3	215
Mobile Library	12	13	201
Tennis Court	4	11	211
Kick Wall	5	10	208

VILLAGE FACILITIES

What suggestions do you have for further improvements to Village Facilities?



A	Improvements to/more restaurants
B	Play area/playing fields improvements
C	Faster broadband
D	Improvements to/more stores
E	Better use of Notice boards
F	Installation of a ATM/Pay point
G	Retaining Fire and rescue station
H	Tennis court improvements

Some of the other points that were suggested are:

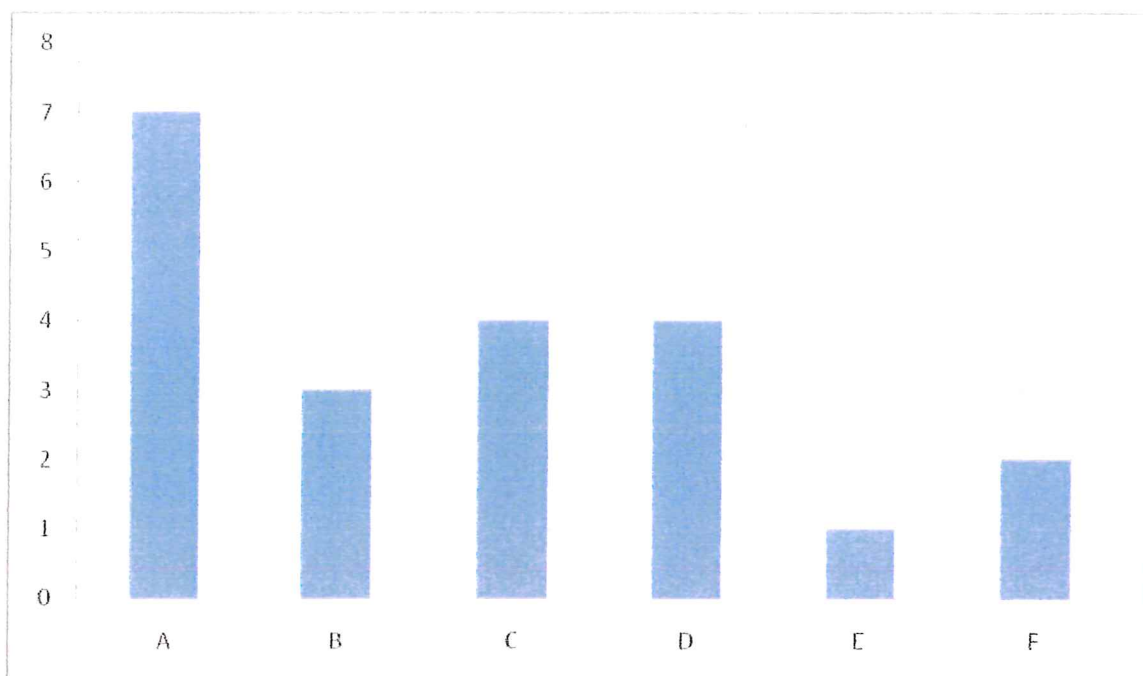
- More litter bins
- More youth clubs aimed at the older children
- Market/car boot sales
- Lottery facilities
- Vets
- Minor Car repairs

VILLAGE FACILITIES

Are you registered at the local Doctors' Surgery?

	Num.	%
Yes	210	91.7
No	19	8.3
Total	229	100.0

Are there any other health facilities or services that you or a member of your family would like to see offered in Brinklow?



A	None – services are good
B	Chiropodist
C	Physiotherapy
D	Dentist
E	Blood donor centre/days
F	Chemist

The other suggestions was on improving the services already provided

- Extra parking at the Doctors surgery
- Extended hours at the Doctors surgery

COMMUNICATIONS

As members of the public, do you know you can attend Parish Council Meetings, which are held on the second Monday of each month?

	Num.	%
Yes	188	83.2
No	38	16.8
Total	226	100.0

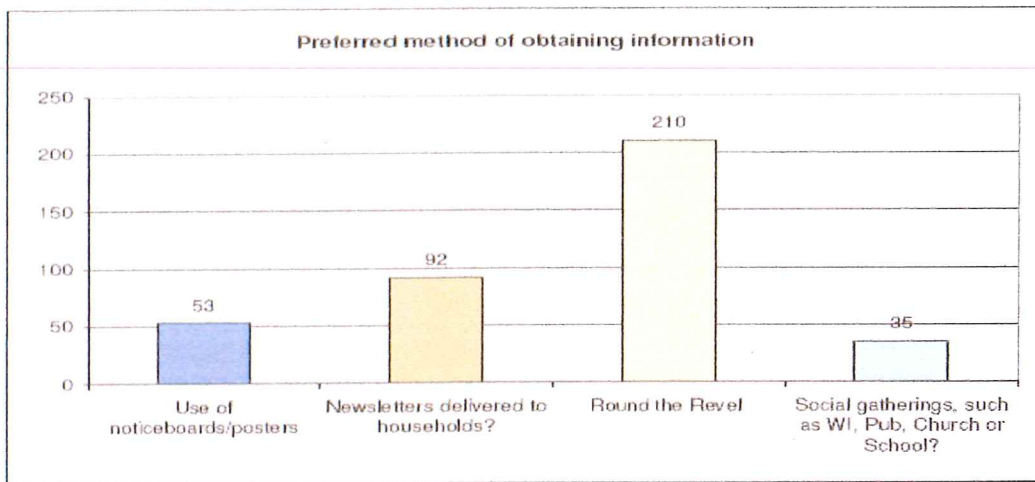
How appropriate do you think the level of police support is in the village?

	Num.	%
Good	14	6.4
Satisfactory	80	36.7
Poor	124	56.9
Total	218	100.0

Would you be prepared to actively support Neighbourhood Watch?

	Num.	%
Yes	134	64.4
No	74	35.6
Total	208	100.0

How do you prefer to get information about what is happening in the village?



	Num.	%	% Replies
Use of noticeboards/posters	53	13.6	23.0
Newsletters delivered to households?	92	23.6	40.0
Round the Revel	210	53.8	91.3
Social gatherings, such as WI, Pub, Church or School?	35	9.0	15.2
Total	390	100.0	

COMMUNICATIONS

Do you have access to the Internet?

	Num.	%
Yes	156	67.8
No	74	32.2
Total	230	100.0

If yes, what is your download speed?

High	Low	Average for village
2.4 Mbps	129 Kbps	1.505 Mbps

Additional notes: 1024Kb = 1Mb

UK average download speed 7.69 Mbps

Are you aware of the Village Website? (brinklowvillage.co.uk)

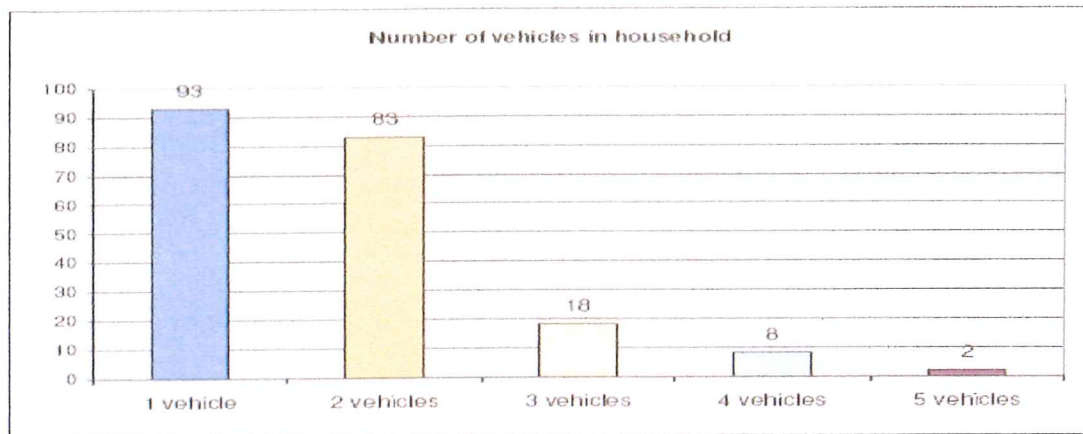
	Num.	%
Yes	114	52.8
No	102	47.2
Total	216	100.0

TRANSPORT AND TRAFFIC

Does your household have access to a motor vehicle?

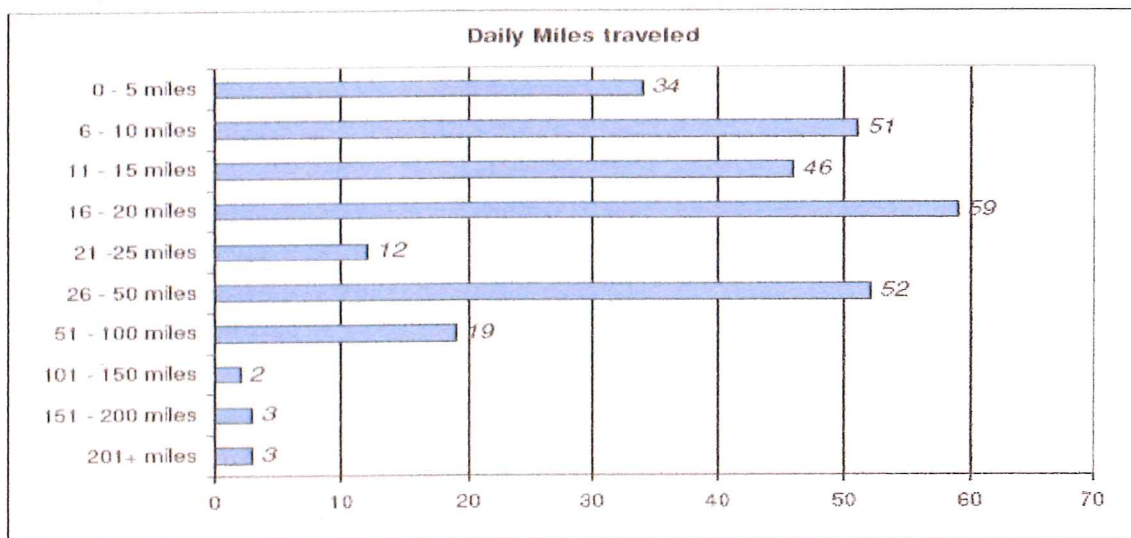
	Num.	%
Yes	206	89.2
No	25	10.8
Total	231	100.0

If so, how many vehicles in your household?



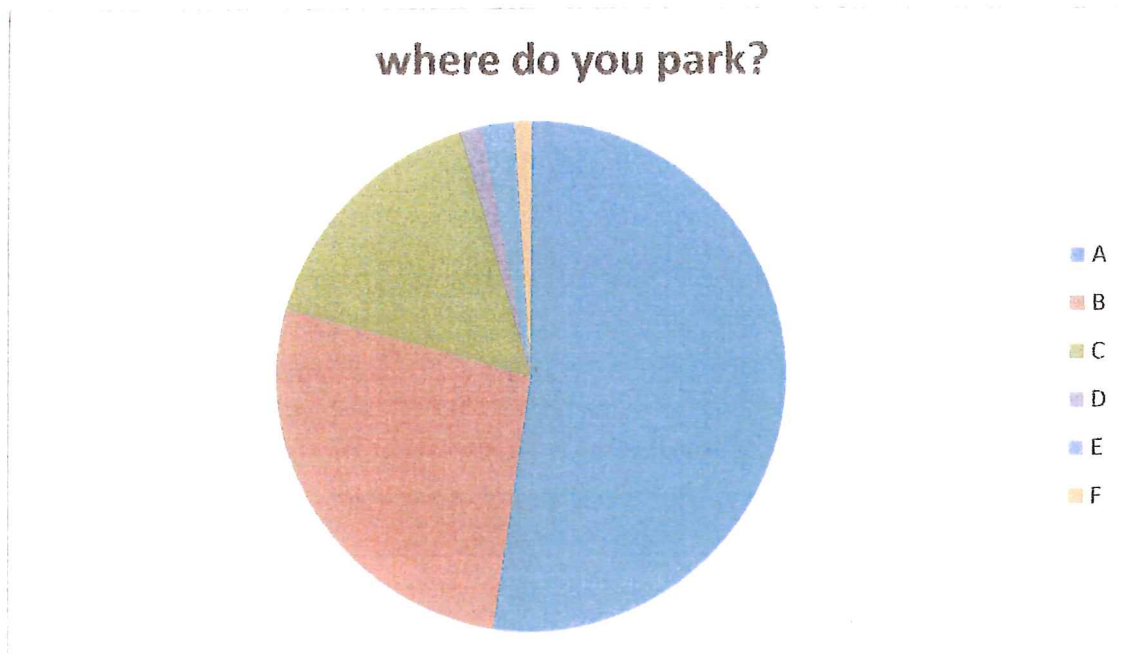
	Num.	%
1	93	45.6
2	83	40.7
3	18	8.8
4	8	3.9
5	2	1.0
Total	204	100.0

On average, how many miles do you travel each day?



TRANSPORT AND TRAFFIC

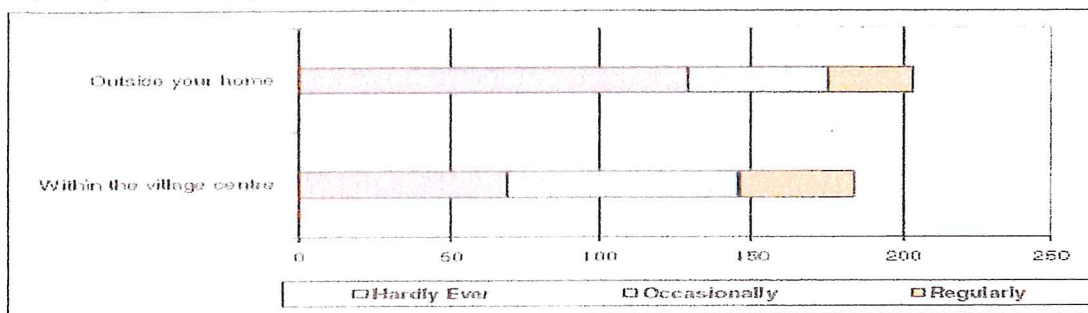
Where do you park?



A	Drive	177
B	Garage	91
C	On the road	54
D	Parking space/Parking bay	5
E	Off road (without location)	7
F	Forecourt	4

The other locations were: Front or rear lawn – 2: Rear of Property – 1: Under Carport – 1

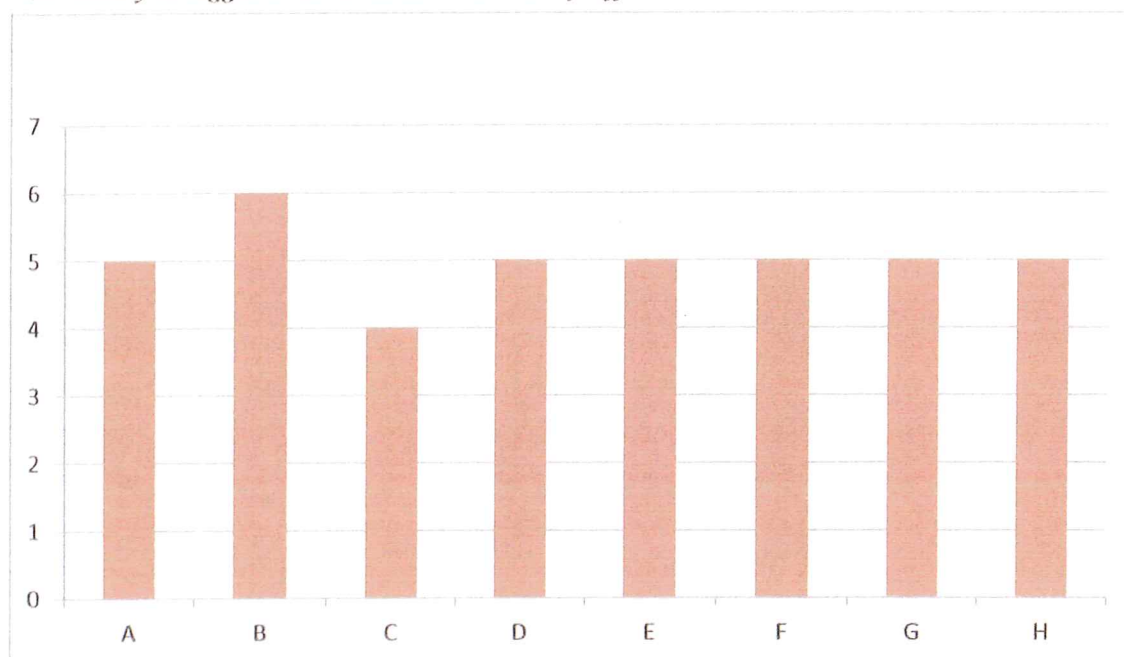
Do you experience any problems with parking?



	Hardly Ever	Occasionally	Regularly
<i>Outside your home?</i>	129	46	28
<i>Within the village centre?</i>	69	77	38

TRANSPORT AND TRAFFIC

What would you suggest could be done to resolve any difficulties?



A	Changing empty grass land into car parks
B	Double yellow lines on Broad street
C	Parking on only one side of Broad street
D	Stopping cars parking in front of/opposite driveways
E	Village parking permit system
F	Encourage the use of garages for parking rather than storage
G	Encourage people to walk
H	None

Some other suggestions were:

- Using the pub car park
- Stopping heavy goods vehicles from parking in Broad street
- Creating a village car park
- 45 degree parking on Broad street
- Front gardens being converted to driveways
- Improved awareness of parking actions

TRANSPORT AND TRAFFIC

Do you use local bus services?

	Num.	%
Yes	135	59.2
No	93	40.8
Total	228	100.0

If so how often?

	Num.	%
Daily	17	13.1
Weekly	66	50.8
Monthly	47	36.2
Total	130	100.0

If so, where to?

	To Coventry	To Rugby	Both
Hospital	24		
Social	10	8	64
Shopping	8	17	35
Health care	-	1	4
Banking	-	-	2
Work	5	2	5
School/College	2	9	2
Other	2	2	3

Would you like to see more bus shelters?

	Num.	%
Yes	73	36.9
No	125	63.1
Total	198	100.0

If 'yes', where?

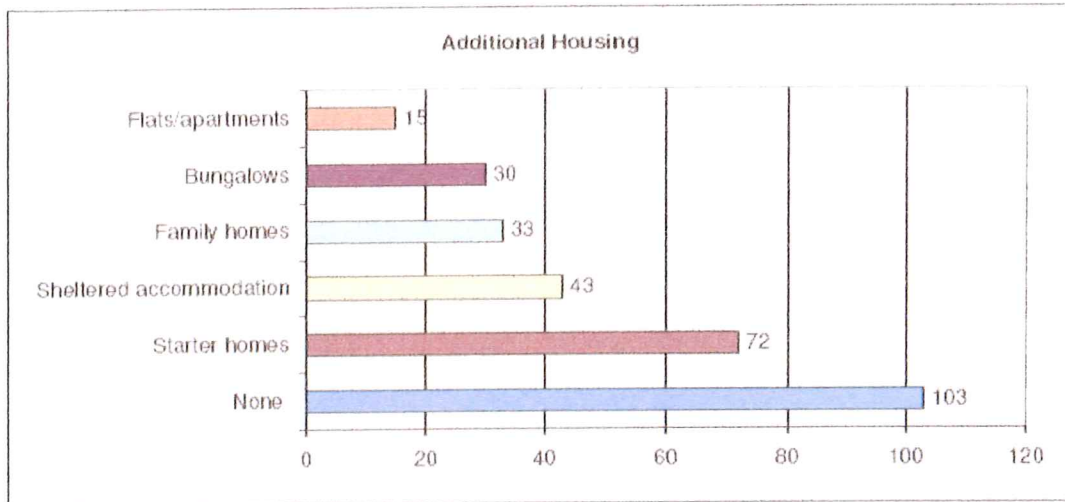
	Num	%
Great Balance	31	48.5
Broad Street	20	31.3
Nowhere (attract teenagers)	5	7.8
Every bus stop	4	6.2
Bulls Head	2	3
Lutterworth Road	1	1.5
Not outside my house	1	1.5
Total	64	100.0

Are you aware of the Rugby Rural Link Minibus Scheme?

	Num.	%
Yes	106	47.5
No	117	52.5
Total	223	100.0

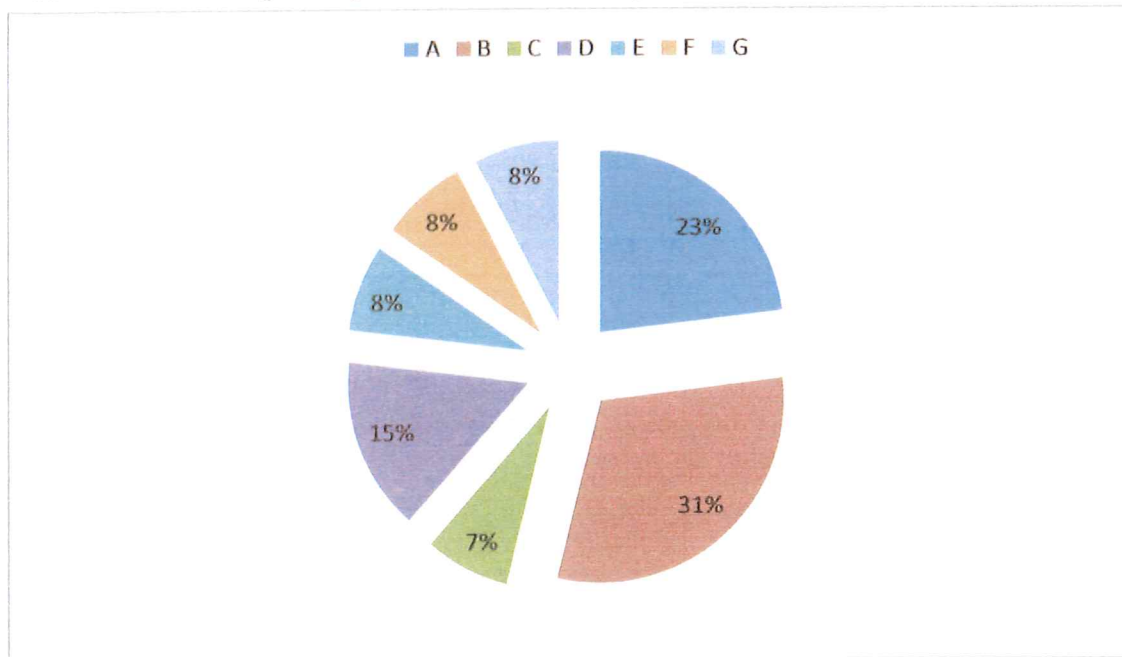
HOUSING

What additional housing would you like to see in the village?



	Num.	%	% Replies
Starter homes	72	24.3	35.0
Family homes	33	11.1	16.0
Sheltered accommodation	43	14.5	20.9
Flats/apartments	15	5.1	7.3
Bungalows	30	10.1	14.6
None	103	34.8	50.0
Total	296	100.0	

What additional housing would you like to see in the village?



HOUSING

A	None, the village cannot support it	3
B	Low cost housing	4
C	Council Accommodation	1
D	Retirement homes	2
E	Mixed priced housing	1
F	None, more facilities	1
G	Executive houses	1

If you would like to see more housing, where should it be?

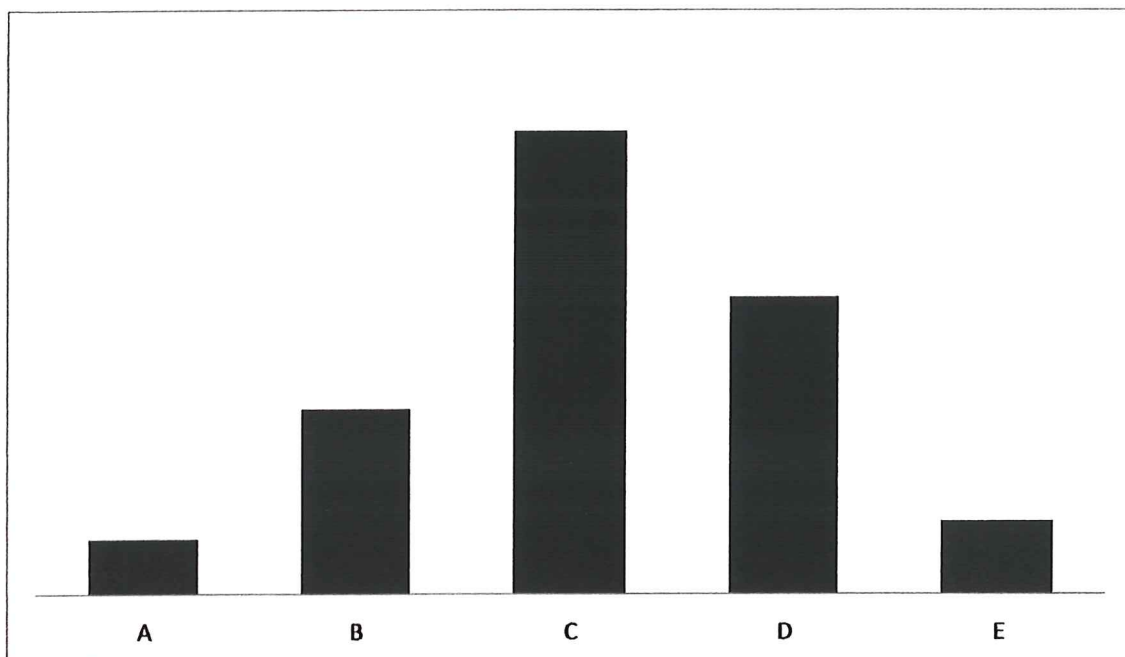
	Num	%
Infilling within village boundary	12	18.7
No further housing	8	12.5
British Legion/Fire Station site	8	12.5
Off Green Lane	7	11.0
Coventry Road	6	9.4
Rear of Heath Lane	5	7.8
Rugby Road	5	7.8
Corner Coventry Road & Ansty Road	4	6.2
Bretford Road	3	4.7
Waste ground beside Park entrance Coventry Rd	3	4.7
Lutterworth Road	3	4.7
Total	64	100.0

Other suggestions were:

- Easenhall Road
- Great Balance
- Next to Church
- Field behind the Fire Station
- Off Broad Street behind White Lion
- Ell Lane
- Ansty Road
- Wherever Planning allows
- Not next to my house

HOUSING

How and/or where would you like to see the village grow?



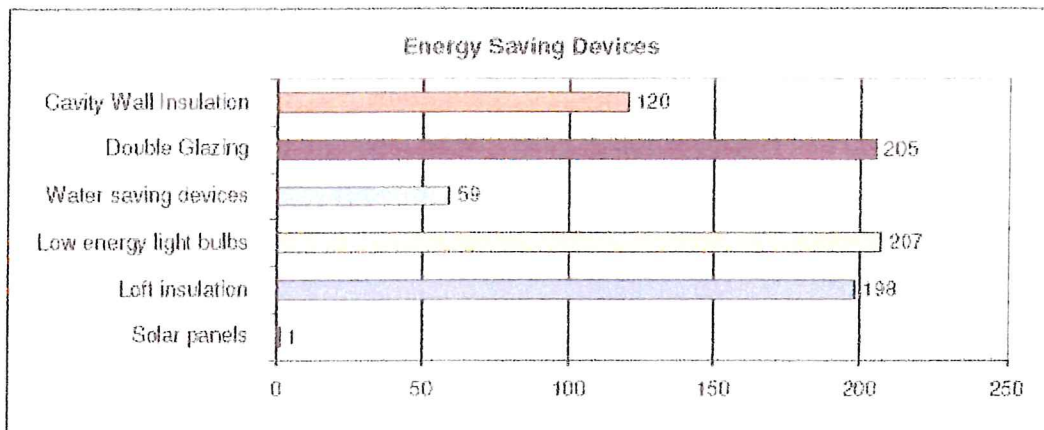
A	No more housing
B	Gradual development of entire village
C	Nothing at all
D	Housing development
E	Improve facilities

Do you think energy saving is important?

	Num.	%
Yes	224	97.4
No	6	2.6
Total	230	100.0

HOUSING

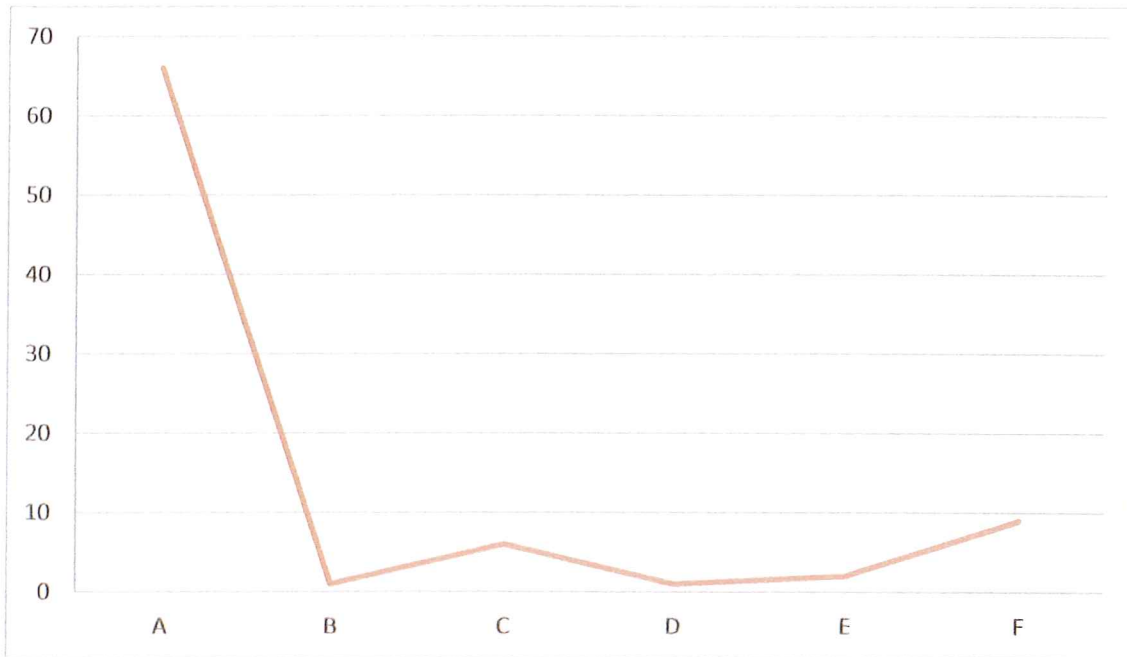
Does your home have any of the following energy saving devices?



	Num.	%	% replies
Cavity Wall Insulation	120	15.2	51.9
Double Glazing	205	25.9	88.7
Water saving devices	59	7.5	25.5
Low energy light bulbs	207	26.2	89.6
Loft insulation	198	25.1	85.7
Solar panels	1	0.1	0.4
Total	790	100.0	

ENVIRONMENTAL SERVICES

Now that the Recycling Scheme is established within the village, do you have any comments to make?



A	Very good
B	Did not know there was one
C	Weekly collections
D	Having a large item collections
E	Metal recycling
F	Making more frequent green bin collections